



# MONTHLY MEMBERSHIP PROGRESS REPORT

District 33 S

Results as of: 6/30/2017

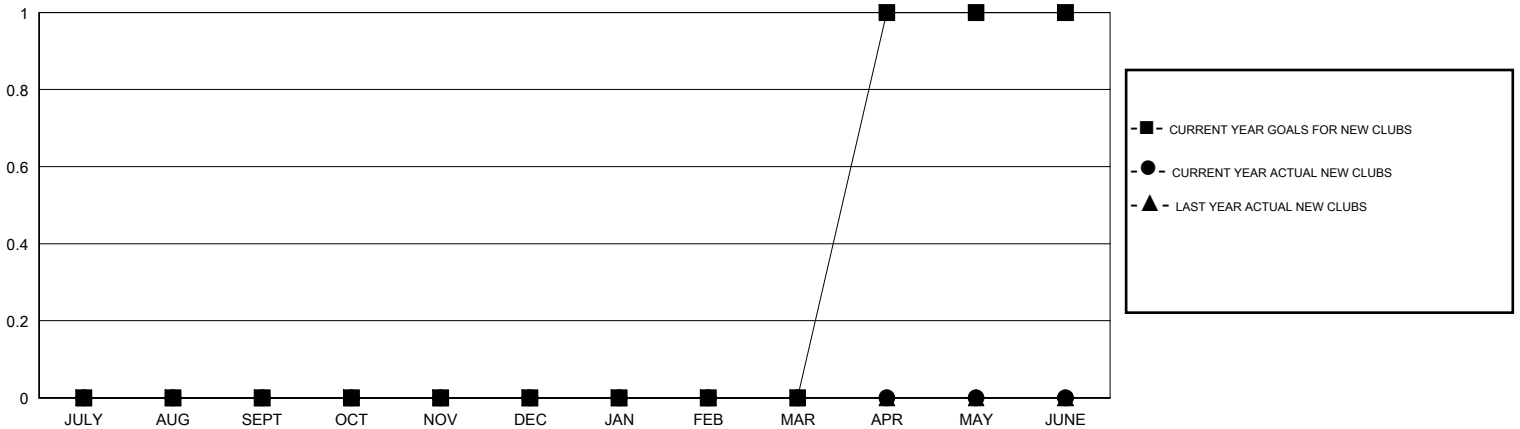
GMT: OPEN

LOCATION MASSACHUSETTS

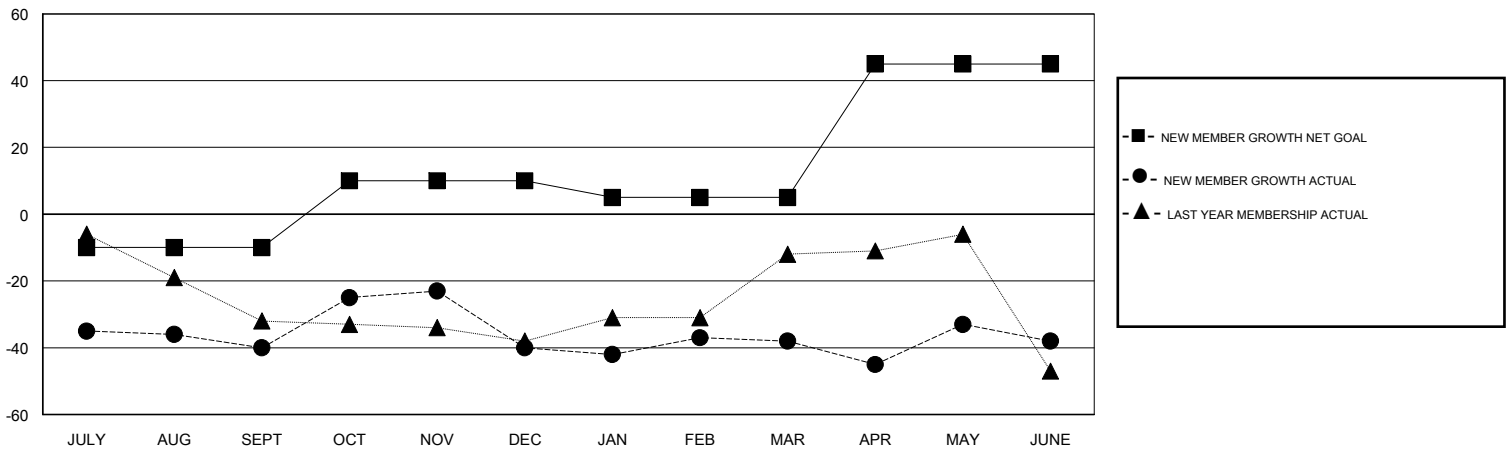
GMT CA

Clubs				Members			
RESULTS FOR 2016-2017				RESULTS FOR 2016-2017			
QUARTER	NEW CLUB GOAL	NEW CLUBS	DROPPED CLUBS	QUARTER	NEW MEMBER GROWTH NET GOAL (not reinstated or transfers)	NEW MEMBER GROWTH ACTUAL (not reinstated or transfers)	DROPPED MEMBERS ACTUAL (including transfers)
JULY/AUG/SEPT	0	0	2	JULY/AUG/SEPT	-10	28	68
OCT/NOV/DEC	0	0	0	OCT/NOV/DEC	20	42	42
JAN/FEB/MAR	0	0	0	JAN/FEB/MAR	-5	25	23
APR/MAY/JUNE	1	0	0	APR/MAY/JUNE	40	43	43

GOALS AND ACTUAL NEW CLUBS CUMULATIVE



GOALS AND ACTUAL MEMBERS CUMULATIVE



DROPPED CLUBS: 2	29 CLUBS OF 49 ADDED 1 OR MORE NEW MEMBERS	<u>GENDER DISTRIBUTION</u>
		MALE 1,133 (65.83%)
		FEMALE 588 (34.17%)
<u>DROPPED MEMBERS</u>	<a href="#">CLICK HERE FOR CUMULATIVE MEMBERSHIP DATA</a>	TOTAL FAMILY UNIT MEMBERS 214
DECEASED 22		FAMILY MEMBERS PAYING HALF DUES 110
CLUB CANCELLED 0		
OTHER 155		
<b>TOTAL 177</b>		